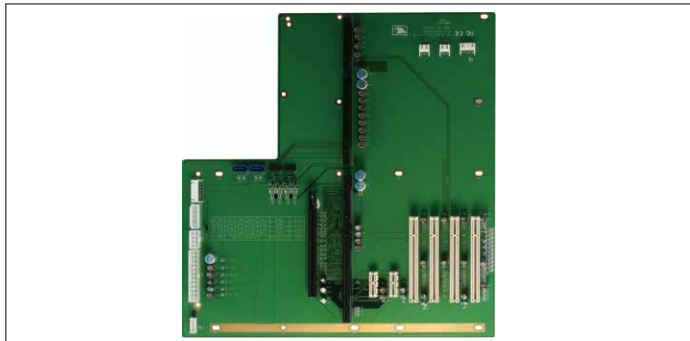


# PICMG 1.3 Backplanes

## BP-208RH-P4E3

Rackmount, PICMG 1.3, 8-Slot Backplane, 4 PCI, 2 PCI-E [x1], 1 PCI-E [x16], Single Segment



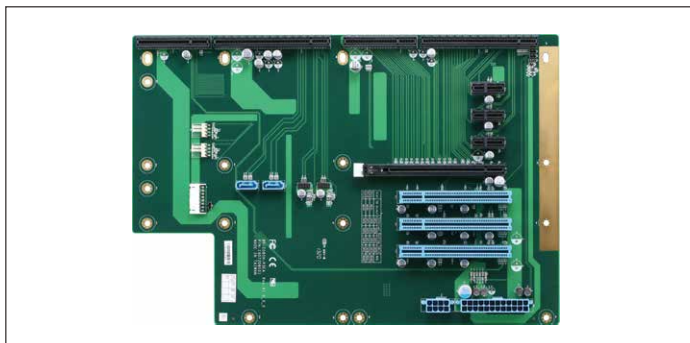
Master	PICMG 1.3
PICMG 1.3	1
PCI	4
PCI-E [x1]	2
PCI-E [x16]	1
System	Single
Fan Connector	2
ATX Power Connector	1
Dimension	12.4" x 12.87" (315mm x 327mm)

### Ordering Information

- **TF-BP-208RH-P4E3-A10**  
Rackmount, PICMG 1.3, 8-Slot Backplane, 4 PCI, 2 PCI-E [x1], 1 PCI-E [x16], Single Segment, Rev. A1.0

## BP-208SH-P3E4

Wallmount, PICMG 1.3, 8-Slot Backplane, 3 PCI, 3 PCI-E [x1], 1 PCI-E [x16], Single Segment



Master	PICMG 1.3
PICMG 1.3	1
PCI	3
PCI-E [x1]	3
PCI-E [x16]	1
System	Single
Fan Connector	2
ATX Power Connector	1
Dimension	10.4" x 8.6" (264mm x 219mm)

### Ordering Information

- **BP-208SH-P3E4-A10**  
Wallmount, PICMG 1.3, 8-Slot Backplane, 3 PCI, 3 PCI-E [x1], 1 PCI-E [x16], Single Segment, Rev. A1.0
- **BP-208SH-P3E4-A10-01**  
Wallmount, PICMG 1.3, 8-Slot Backplane, 3 PCI, 3 PCI-E [x1], 1 PCI-E [x16], Single Segment, ATX, Rev. A1.0, Bulk Pack